

**2025 CMAAO General Assembly, Kathmandu
Kathmandu, Nepal**



JMA



Member Medical Association Report

Japan Medical Association



JMA

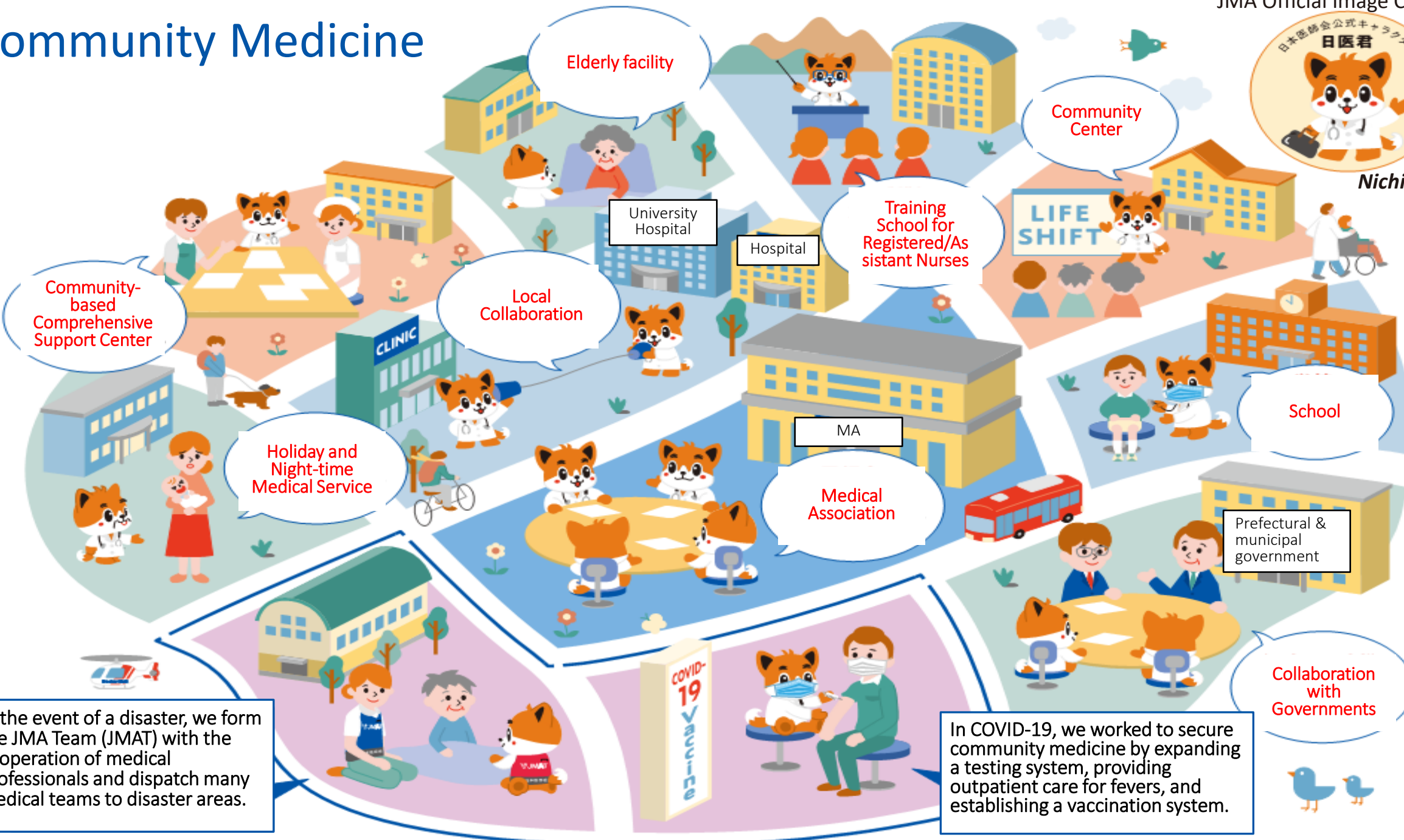
**The Japan Medical Association is committed to protecting
the lives and health of the people.**

We are particularly deeply involved in community medicine.

Community Medicine



Nichii-kun



In the event of a disaster, we form the JMA Team (JMAT) with the cooperation of medical professionals and dispatch many medical teams to disaster areas.

In COVID-19, we worked to secure community medicine by expanding a testing system, providing outpatient care for fevers, and establishing a vaccination system.



地域医療

高齢者施設

配置医師・嘱託医として施設の高齢者の健康を見守る

公民館

地域住民への健康啓発活動

日本医師会公式キャラクター

日医君

看護師・准看護師養成所

地域で働く看護職を育成するために、地域の医師会が運営

LIFE SHIFT

地域包括支援センター

多職種連携で地域の高齢者を支える

地域連携

基幹病院等がかかりつけ医が連携して地域医療を支える

・Environmental Health

学校

学校医として児童・生徒の成長・健康を見守る

休日夜間診療

初期救急を当番で担当することで、基幹病院の救急対応をサポート

医師会

地域医療の発展や、患者・市民の健康を守るために、より強い医療体制を構築

・Maternal and Child Health

行政との連携

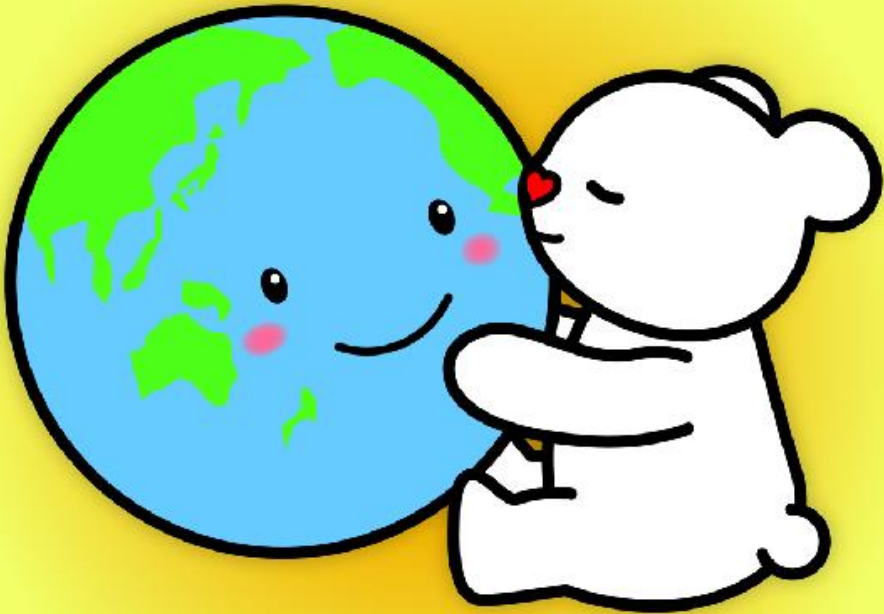
災害時には、医療従事者の協力を得て日本医師会災害医療チームJMAT*を結成し、多くの医療チームを被災地に派遣しています。

*JMAT: Japan Medical Association Team

COVID-19では、検査体制の拡充のほか、発熱外来診療やワクチン接種体制の構築等、地域医療の確保に尽くしました。

JMA Declaration
on the Environment

**We will protect the
health of the planet
and human beings**



**Japan Medical Association Declaration
on the Environment** (*April 21, 2009*)

The Japan Medical Association will actively engage in the following measures:

1. Promote environmentally conscious medical practices
2. Advance environmental health education
3. Raise awareness of the importance of environmental health and engage in local environmental health activities
4. Advocate to the government and other entities to create a safe and prosperous environment where people can live with peace of mind

Action Plan for Achieving Carbon Neutrality in Hospitals

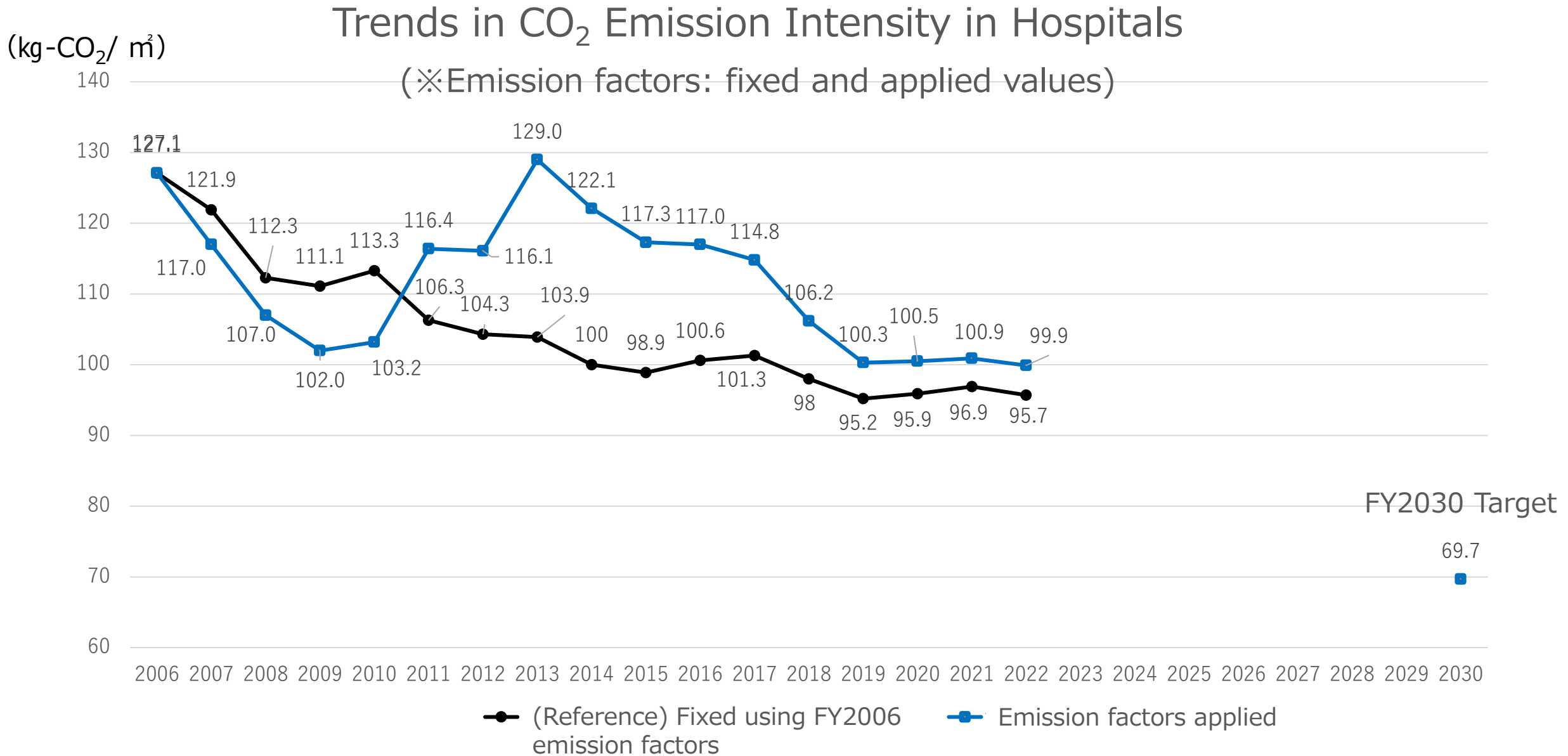
Council for Promoting Global Warming Countermeasures in Hospitals

- Established in 2009. Composed of the Japan Medical Association, Council of Four Hospital Organizations (All Japan Hospital Association, Japan Hospital Association, Association of Japanese Healthcare Corporations, Japan Psychiatric Hospital Association), and the Tokyo Medical Association as a representative of prefectural medical associations.

Goal

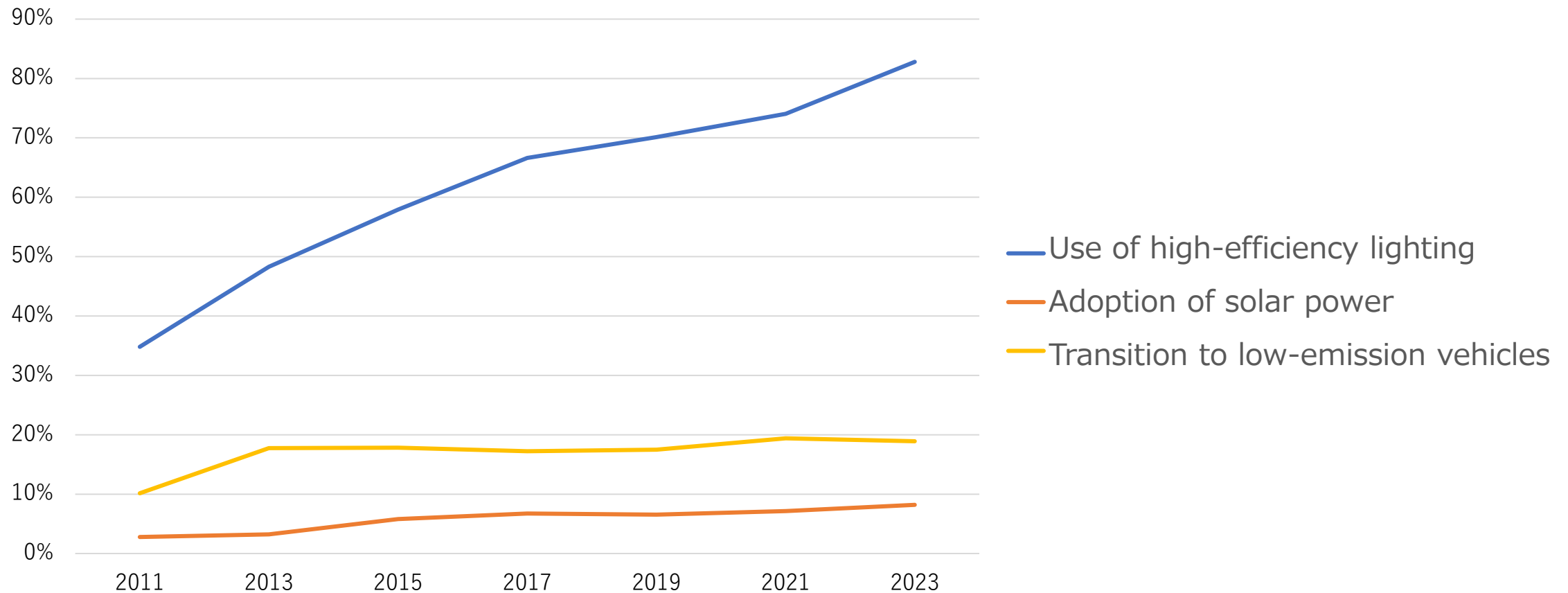
Reduce CO₂ emission intensity by 46% by FY2030 compared to FY2013 and aim for further reductions toward FY2050.

Action Plan for Achieving Carbon Neutrality in Hospitals

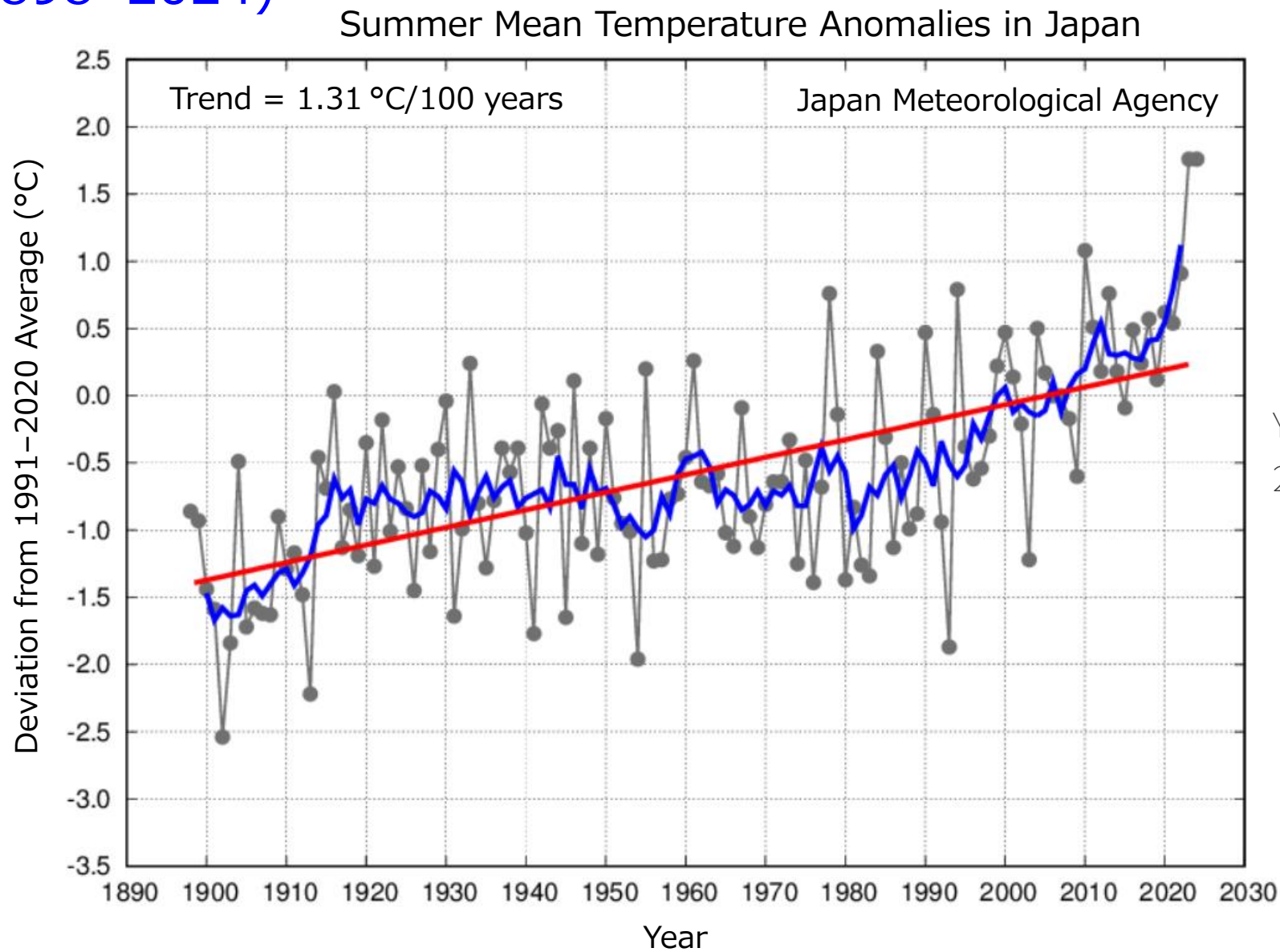


Action Plan for Achieving Carbon Neutrality in Hospitals

Trends in Implementation Rates of Energy-Saving and Global Warming Countermeasure Activities (Hardware Measures)

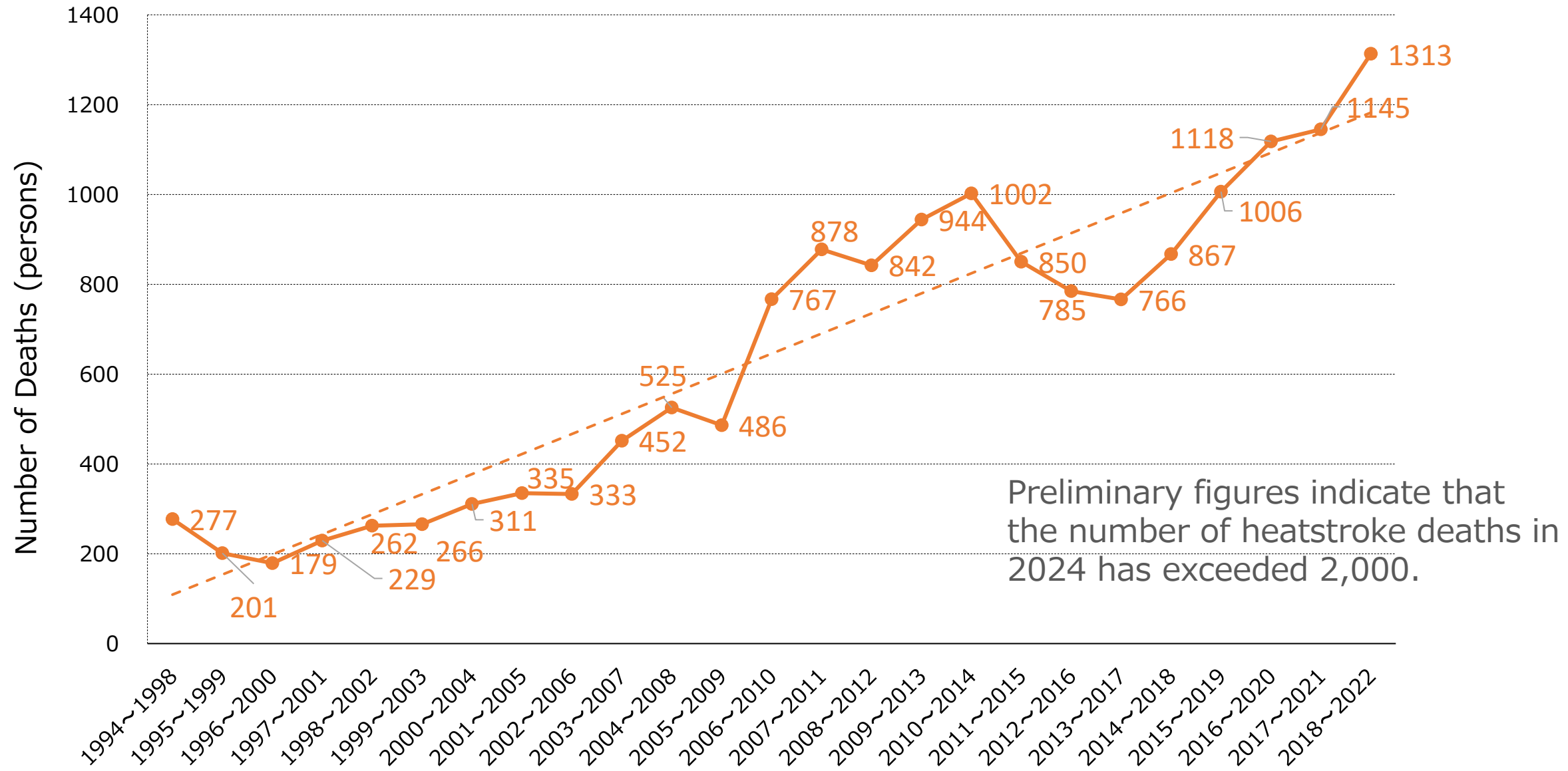


Trends in Summer (June–August) Mean Temperature Anomalies in Japan (1898–2024)



Years with the Largest Positive Deviations:
2024 and 2023 (+1.76°C)

Heatstroke Deaths: 5-Year Moving Average (Nationwide)



Heatstroke Warnings (Japan Medical Association Website)

Heat Stroke Measures in the Workplace
(for Occupational Physicians)
Commentary by JMA Vice President Satoshi Kamayachi

Take Care to Avoid Heatstroke

Nichii-kun explains heatstroke in three parts.

- About Heatstroke
- Heatstroke Prevention
- How to Respond to Heatstroke

The screenshot shows the top of the Japan Medical Association (JMA) website. At the top left is the JMA logo and name in Japanese and English. To the right are navigation links for 'アクセス' (Access), '日本医師会について' (About JMA), and 'サイトマップ' (Site Map). Below this is a main navigation bar with 'ホーム' (Home), '国民のみなさまへ' (For the General Public), '医師のみなさまへ' (For Physicians), and 'メンバーズルーム' (Members Room). The main banner features a large orange sun, a green megaphone, and a thermometer. The central text reads '熱中症にご注意ください' (Please be careful of heatstroke). On the right, there is a circular portrait of Satoshi Kamayachi and a cartoon fox character named Nichii-kun wearing a hat and holding a sunflower. Below the main text are three video thumbnails for '熱中症について' (About heatstroke), '熱中症予防について' (About heatstroke prevention), and '熱中症の対処法' (How to deal with heatstroke). A speech bubble from Nichii-kun says '熱中症について日医君が3パートに分けて解説します!' (Nichii-kun explains heatstroke in 3 parts!). At the bottom, it says '日本医師会公式YouTubeチャンネル' (Official JMA YouTube Channel).

JECS

Japan Environment and Children's Study
For the future crew of the Earth

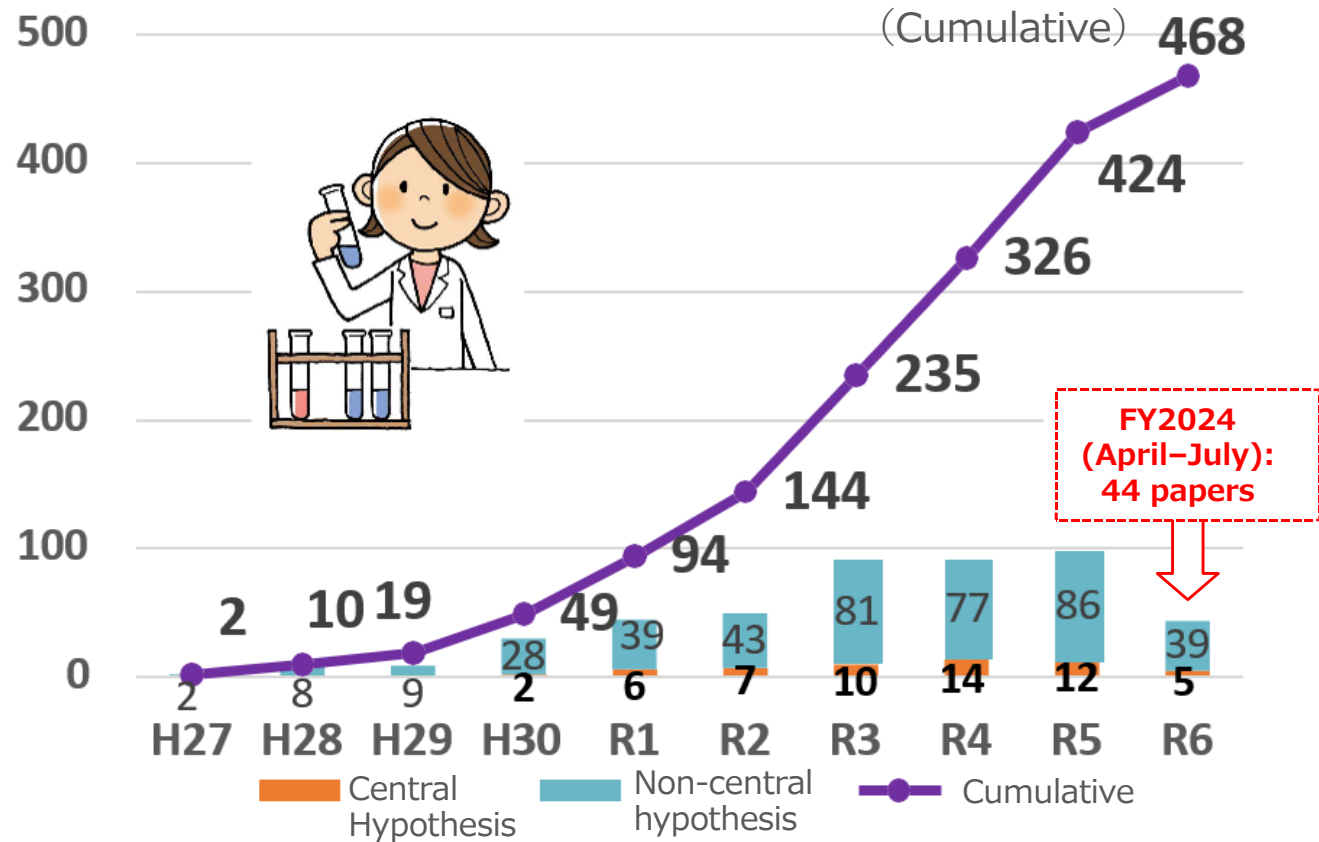


Study Objectives and Overview

- The JECS aims to clarify how exposure to chemical substances and other environmental factors affects children's health from the fetal period through childhood.
Through providing this information to risk management authorities and businesses, the study seeks to support the establishment of appropriate risk management systems.
- To elucidate the health effects of environmental factors such as chemical substances, the JECS has been conducted since FY2010, targeting approximately 100,000 parent-child pairs, with most participants continuing their cooperation.
- Biological samples (e.g., blood) from participants—approximately 5.6 million specimens—are collected, stored, and analyzed, while follow-up surveys using questionnaires and other instruments are conducted.
- The basic plan, initially covering up to the school-age stage (up to 12 years old), has been revised to extend the study beyond age 13. This revision was based on discussions by the JECS Planning and Evaluation Committee (announced on March 30, 2023). These discussions were informed by the report of the Study Group on Epidemiological Research on Health and the Environment (March 29, 2022).

Research Findings

- As of the end of July 2024, **468 papers** have been published based on nationwide **data (56 on central hypotheses)**.
- Associations between maternal exposure to chemical substances and children's health outcomes, such as growth and allergic diseases, have been clarified.



Central Hypothesis: Environmental factors, including chemical exposures from the fetal period through childhood, may affect pregnancy and reproduction, congenital malformations, neurodevelopment, immune and allergic responses, as well as metabolic and endocrine systems.

List of Research Findings <https://www.env.go.jp/chemi/ceh/results/publications.html>

Ethylene Oxide

Ethylene oxide (used for sterilization of medical devices and other purposes) is known to be strongly carcinogenic and is classified as Group 1 carcinogen "carcinogenic to humans" by the International Agency for Research on Cancer (IARC).

In February 2023, the Japan Medical Association and the Council of Four Hospital Organizations jointly submitted a letter to the Ministry of the Environment regarding efforts to reduce atmospheric emissions of ethylene oxide.

Japanese Association of Medical Sciences "Proposals for the Future"

Japanese Association of Medical Sciences
120th Anniversary Commemorative Project

Proposals for **the Future**

March 2023

Japanese Association of Medical Sciences
"Proposals for the Future" Drafting Committee



日本医学会
創立120周年記念事業

未来への提言

2023年3月

日本医学会
「未来への提言」作成委員会

The Japanese Association of Medical Sciences

Chapter 1: Proposals for the Future

The following are among the proposals:

- Promote awareness of the One Health and Planetary Health paradigms regarding the transformation of the global environment caused by human activities and the relationship between people and ecosystems. From an academic standpoint, advance research on fundamental social and political issues essential for protecting human health, and take the lead in awareness-raising activities together with member organizations.
- Work together with society as a whole to promote the dissemination of adaptation measures to mitigate the impacts of climate change. In addition, jointly with government, industry, and academia, strive to achieve carbon neutrality for greenhouse gas emissions associated with medical and healthcare activities.

WMA DECLARATION OF HELSINKI – ETHICAL PRINCIPLES FOR MEDICAL RESEARCH INVOLVING HUMAN PARTICIPANTS

Adopted by the 18th WMA General Assembly, Helsinki, Finland, June 1964

and amended by the 75th WMA General Assembly, Helsinki, Finland, October 2024 (10th Revision)

11. Medical research should be conducted in a manner that minimises possible harm to the environment.



11. Medical research should be designed and conducted in a manner that avoids or minimizes harm to the environment and strives for environmental sustainability.

PREAMBLE (Excerpts)

Air pollution poses a major global environmental risk to human health, contributing significantly to avoidable morbidity and mortality worldwide. 8.1 million premature deaths occur each year due to the combined effects of ambient and household air pollution.

Air pollutants are a leading risk factor for the burden of non-communicable diseases, leading to stroke, myocardial infarctions, lung cancer as well as chronic respiratory illnesses. It also increases the risk of childhood asthma and asthma severity.

The WMA and its constituent members should:

(Excerpts)

- Advocate for and support the integration of health impacts of air pollution and its solutions into medical curricula and professional educational programs, fostering a comprehensive understanding and proactive approach among healthcare professionals.
- Encourage collaboration between organised medicine and other stakeholders, including government agencies and international organizations, to develop best practices for minimising greenhouse gas emissions and plastic use in healthcare settings.

The WMA urges governments to:

(Excerpts)

- Enhance early warning systems for anticipated poor air quality periods and prepare health systems to handle air pollution-related health impacts effectively.
- Implement measures that improve air quality, such as increasing access to clean energy and creating green spaces.

地域医療

高齢者施設

配置医師・嘱託医として施設の高齢者の健康を見守る

公民館

地域住民への健康啓発活動

日本医師会公式キャラクター

日医君

看護師・准看護師養成所

地域で働く看護職を育成するために、地域の医師会が運営

LIFE SHIFT

地域包括支援センター

多職種連携で地域の高齢者を支える

地域連携

基幹病院等とかかりつけ医が連携し医療提供

・Environmental Health

学校

学校医として児童・生徒の成長・健康を見守る

休日夜間診療

初期救急を当番で担当することで、基幹病院の救急対応をサポート

医師会

地域医療の発展や、患者・市民の健康を守るために、より強い医療体制を構築

・Maternal and Child Health

行政との連携

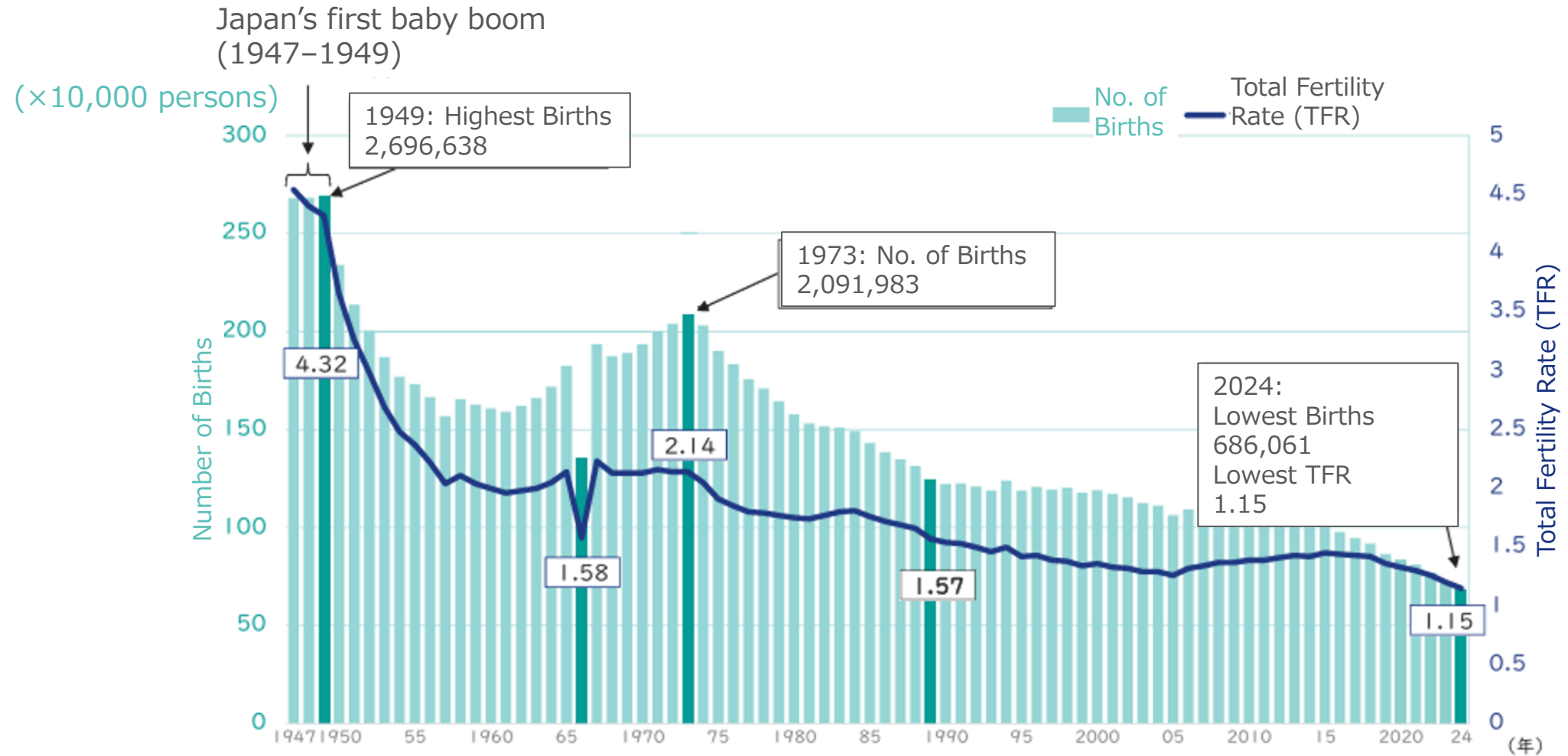
災害時には、医療従事者の協力を得て日本医師会災害医療チームJMAT*を結成し、多くの医療チームを被災地に派遣しています。

*JMAT: Japan Medical Association Team

COVID-19では、検査体制の拡充のほか、発熱外来診療やワクチン接種体制の構築等、地域医療の確保に尽くしました。

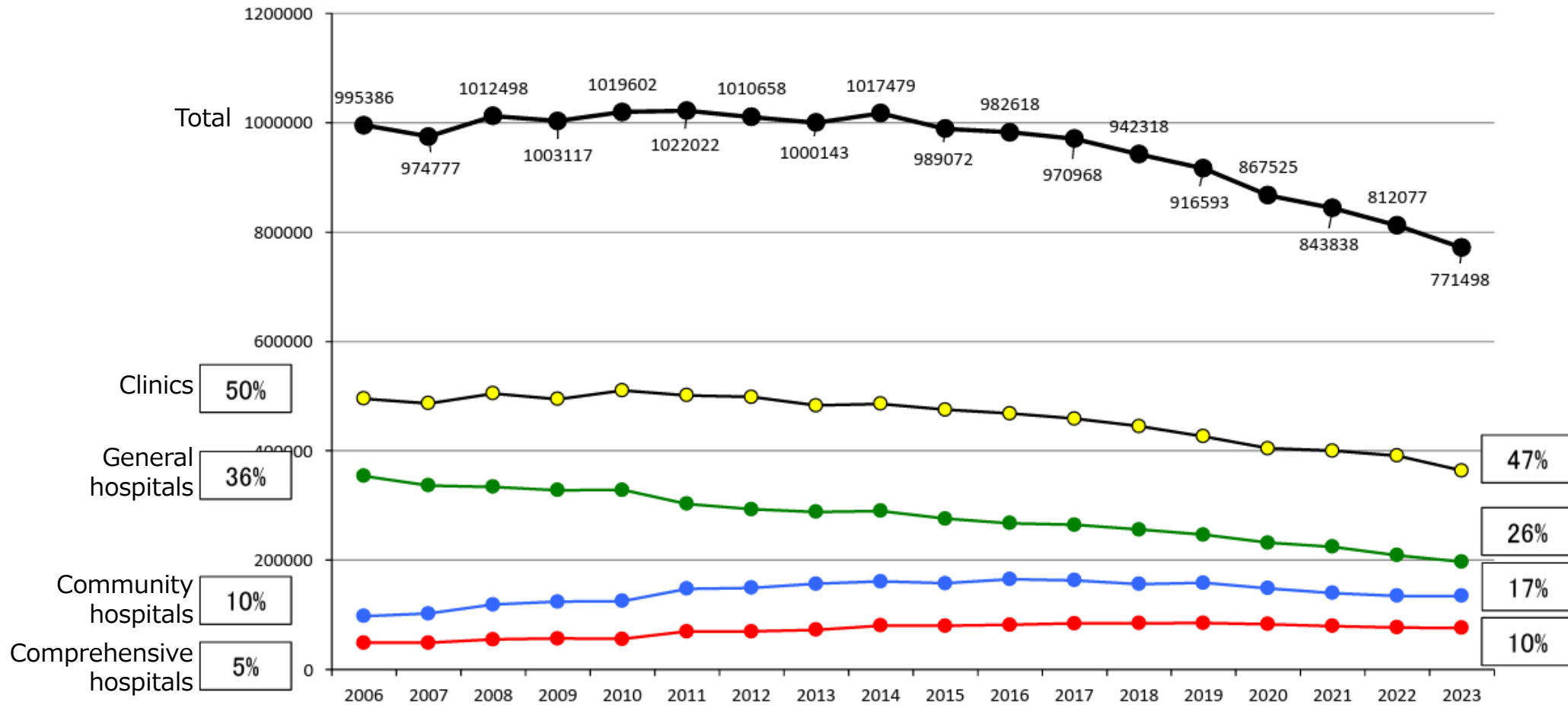
The Current Situation of Pregnancy, Childbirth, and Childrearing in Japan Amid Declining Birthrates

Trends in the Number of Births and the Total Fertility Rate



Source: Vital Statistics of Japan, Ministry of Health, Labour and Welfare
Note: The figure for 2024 is provisional.

Trends in the Number of Deliveries Handled

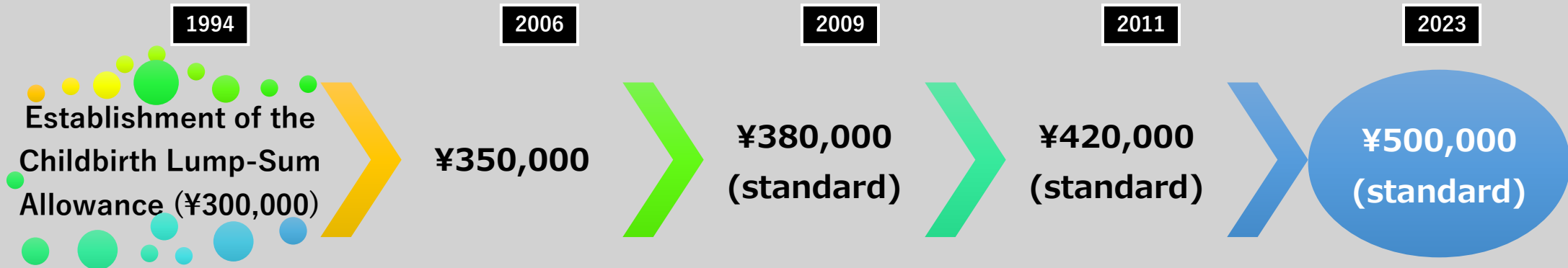


Amid the decline in the number of deliveries, approximately half are conducted at clinics, and the combined number of deliveries at comprehensive and community perinatal maternal and child health centers exceeds that at general hospitals. Nationwide, the handling of deliveries is increasingly polarized between clinics and perinatal maternal and child health centers.

Establishment of the Childbirth Lump-Sum Allowance

Childbirth is not considered a medical illness and is therefore not covered by health insurance. This system was established to alleviate the financial burden of various expenses before and after delivery.

Development of the Childbirth Lump-Sum Allowance



Children's Future Strategy (Cabinet Decision, December 22, 2023)

Reducing the Economic Burden of Childbirth – Seamless support from pregnancy onward, transparency of childbirth costs, and insurance coverage

The strategy examines ways to support pregnant women so that they can give birth safely and with peace of mind. It focuses on reducing their economic burden, improving the transparency of childbirth costs, introducing insurance coverage for normal delivery, and ensuring the availability of physicians to provide anesthesia for epidural delivery.

**By Fiscal Year 2026,
concrete system design toward eliminating out-of-pocket
costs for standard childbirth is being developed,
taking full account of the management realities of
obstetric medical institutions and other factors.**

Preconception Care

- Preconception care is a set of interventions that identify and modify biomedical, behavioral, and social risks to a woman's health and future pregnancies. (CDC : Preconception Health and Care, 2006)
- Preconception care is the provision of biomedical, behavioural and social health interventions to women and couples before conception occurs. (WHO : Preconception care: Maximizing the gains for maternal and child health,2012)

Intensive Initiatives over the Next Five Years

- Dissemination of accurate knowledge and provision of information on sexual and reproductive health
- Enhancement of counseling support related to preconception care
- Strengthening counseling support for preconception care at medical institutions



Support System Based on
the Five-Year Plan

Postpartum Care Program

The program provides physical and mental care as well as parenting support to mothers and children within one year after childbirth, ensuring a support system that allows mothers to raise their children with confidence.

By coordinating with Child and Family Centers and accompaniment-style counseling services, seamless support is provided from pregnancy through the child-rearing period.

Establishment of a Provision System for Postpartum Care Program





JMA

Thank you for your attention!